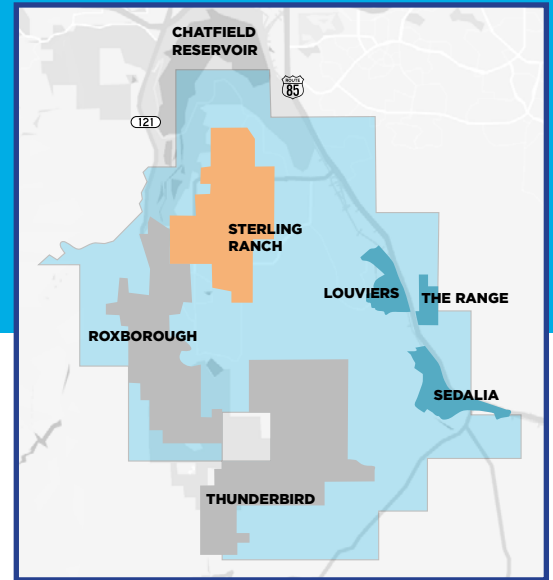


DOMINION WATER & SANITATION DISTRICT



Dominion Water & Sanitation District is a wholesale water and wastewater service provider for Northwest Douglas County. Formed in 2004, Dominion originated as part of the County's vision to bring access to renewable water and centralized wastewater service to the region and currently provides service to 33,000 acres of the County. Dominion is unique in that our water supply starts with renewable surface water sources and we're committed to developing innovative and sustainable ways to grow water supplies and manage existing resources.



Our Customers

Dominion was formed to provide service to Sterling Ranch, an unincorporated community in the northwestern portion of the County, that will be home to more than 30,000 Coloradans once completed. We also anticipate extending services to other communities within our service area.

Our Regional Water System

Everyone in our community plays a role in the delivery of our utility services.

OUR ROLE

Acquire and manage water rights, including an emphasis on renewable water supplies

Develop and maintain a water transmission system, wastewater conveyance system, and treatment facilities

Bill Sterling Ranch Community Authority Board wholesale rates, which collects impact fees

THE RETAILERS' ROLE

Sterling Ranch Community Authority Board (CAB)

Deliver water to customers and collect and convey wastewater for treatment

Develop and maintain water distribution system and wastewater collection system

Bill residential, commercial, industrial, and agricultural users

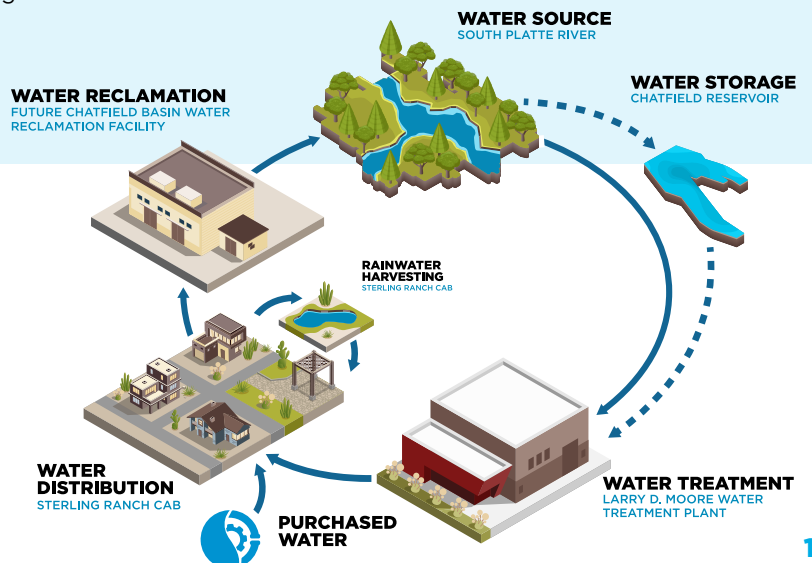
YOUR ROLE

Be an efficient user of the water provided

Maintain a customer account with Sterling Ranch CAB for water and wastewater use

Why Renewable Water?

Douglas County has heavily relied on non-renewable groundwater supplies resulting in historic depletions, since renewable water supplies are limited in this area. We are embarking on significant investments and regional partnerships to provide more renewable water options to the County and increase reliability of our water supply.



Infrastructure Investments

We are building an integrated water delivery system that leverages technology, existing infrastructure, and capital improvement projects to provide reliable and cost-effective service for our customers.

Our goal is to deliver primarily renewable water, which would extend the life of the non-renewable Denver Basin Aquifer.

Completed

- Rueter-Hess Water Purification Facility Pump Station – This facility allows us to receive our full allocation of water from the South Metro (SM) WISE Partnership. Members of the SM WISE Authority are direct beneficiaries of this shared infrastructure.

Design Phase

- Chatfield Basin Water Reclamation Facility – This facility will provide wastewater service to our customers within the Sante Fe corridor. It is currently scheduled to be online in 2027.
- Regional Waterline Connection – This pipeline will allow us to provide service to additional communities along the Sante Fe corridor.
- Cherokee Well Connection – This project will connect our Cherokee groundwater wells to the Eastern Regional Pipeline, ensuring water security during times of drought.
- DIA Connection (WISE Partnership) – This pipeline will connect Denver Water's system to other participants within the WISE Partnership.

Planning Phase

- Regional Rainwater Harvesting Project – The first of its kind in Colorado, this project will allow us to store rainwater for use in outdoor irrigation and collect vital data for future projects. We are pursuing partnerships with Mile High Flood District, the University of Colorado, and Colorado State University to collect rainwater data, and with the Colorado School of Mines to evaluate water quality.

What's Ahead

We are excited about the future of Dominion and are taking steps to carefully plan out ways to ensure sustainable growth of our water services network including:

- Regional collaboration to develop a water reclamation plant and water line connection to store renewable water supplies in Chatfield Reservoir
- Continued partnership with Denver Botanical Gardens to develop water efficient landscaping for Sterling Ranch
- Partnering with our retail customers to ensure efficient use of our water supply both indoors and outdoors
- Growing the ways we communicate with our customers by consistently providing information related to our water supply

We look forward to continuing to lead in innovative ways to provide our community with safe, reliable utility services.

